

## F4/80 Recombinant antibody

**Cat:** B06001R

**Company:** HaokeBIO

**Uniprot ID:** Q61549

**Applications:** IHC/IF: 1:2000-1:8000

**Organism:** Rabbit

**Species reactivity:** Mouse

### Background:

Mouse F4/80, also named as EMR1 and Gpf480, is a 160kd cell surface glycoprotein which is a member of the EGF TM7 family. The F4/80 molecule is solely expressed on the surface of macrophages and serves as a marker for mature macrophage tissues, including Kupffer cells in liver, splenic red pulp macrophages, brain microglia, gut lamina propria and Langerhans cells in the skin. The function of F4/80 is unclear, but it is speculated to be involved in macrophage adhesion events, cell migration or as a G protein-coupled signaling component of macrophages.

### Protein full name:

EGF-like module containing, mucin-like, hormone receptor-like sequence 1

### Synonyms:

Emr1, EGF-like module-containing mucin-like hormone receptor-like 1, EGF-like module receptor 1, Adhesion G protein-coupled receptor E1, Adgre1

### Immunogen:

Recombinant protein

### Isotype:

IgG

### Subcellular location:

Membrane

### Purity:

Affinity purification

### Form:

Liquid

### Storage Buffer:

PBS with 0.02% sodium azide, 100 µg/ml BSA and 50% glycerol.

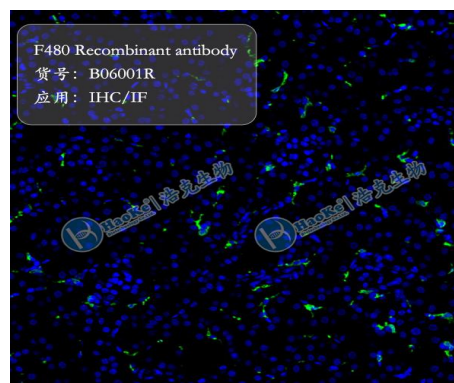
### Storage:

Store at -20 °C for one year.

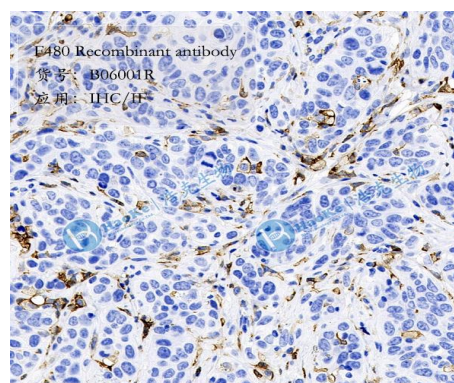
### Experimental procedure:

Antigen retrieval: Citrate buffer (pH 6.0), Medium high heat for 8 minutes, stop for 7 minutes, medium high heat for 8 minutes. Incubate antibody, 4°C overnight. Secondary antibody: Poly-HRP Goat Anti-Rabbit & Mouse Universal Secondary Antibody, RT, 1h.

### Images:



Sample: Mouse kidney, 4% PFA 12-24h.



Sample: Mouse tumor, 4% PFA 12-24h.

